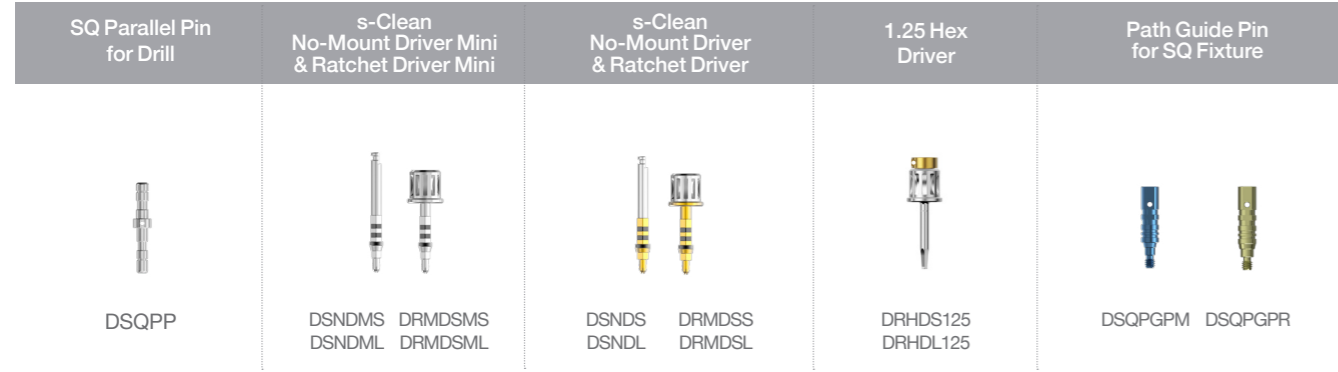
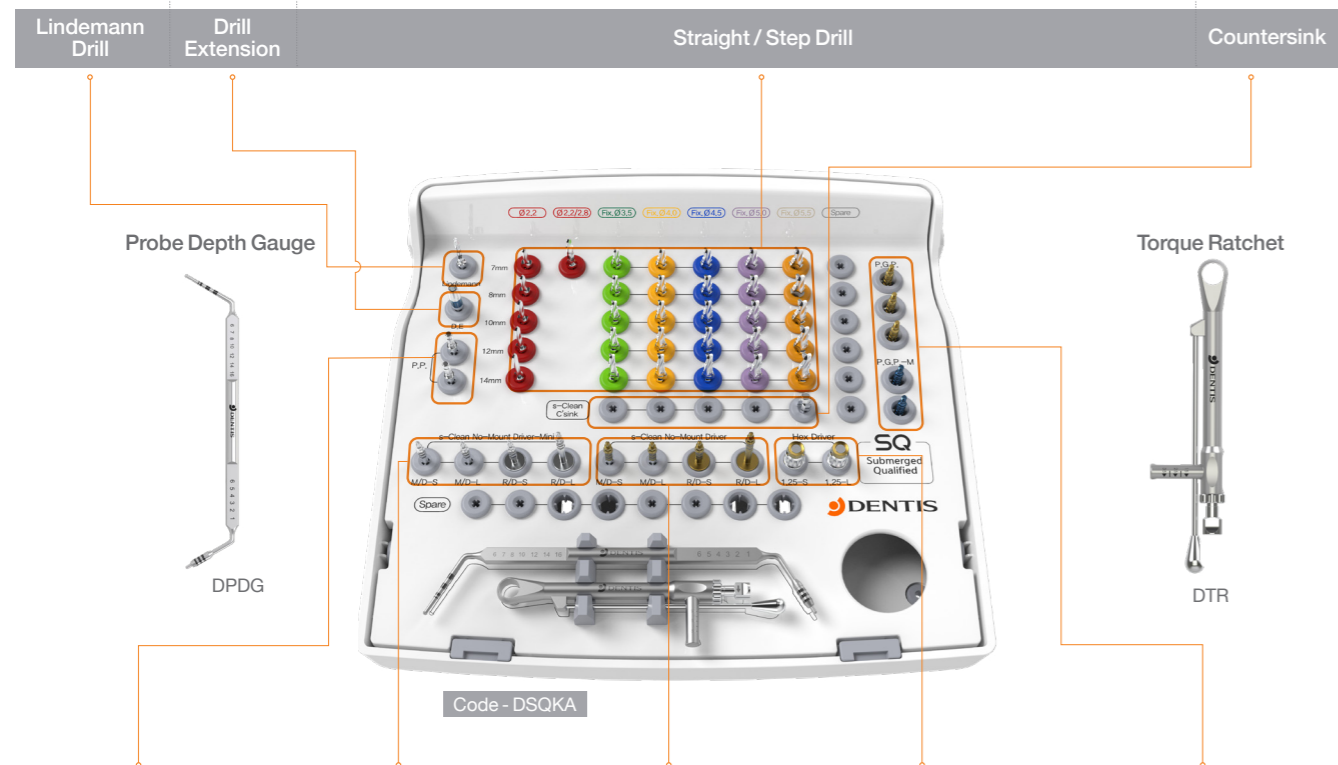
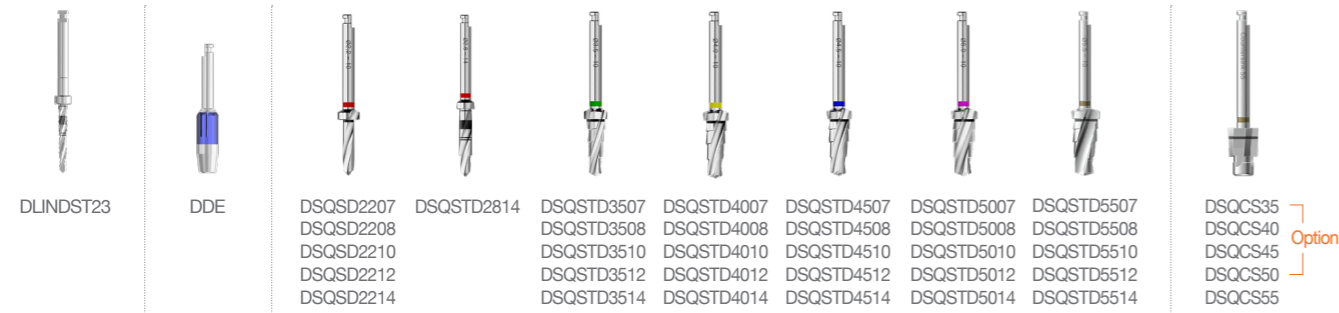
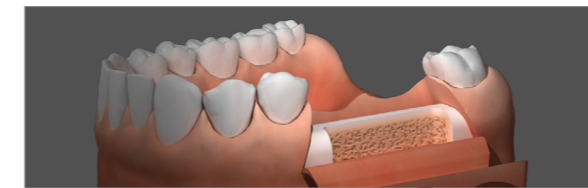


# SQ Surgical Kit

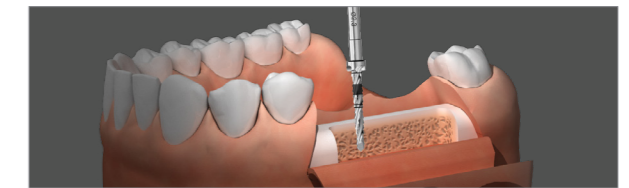


# SQ Surgical Manual



## 1. Incision

- Make an incision in the area where the implant will be placed.



## 2. Lindemann Drill

- Make a guide hold for the initial drilling by using point drill.



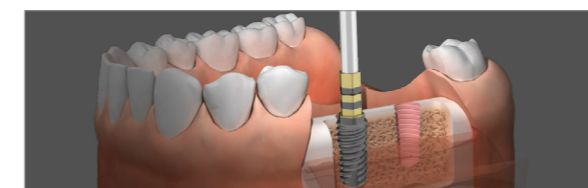
## 3. Straight/Step Drill

- We recommend 800~1,200RPM while drilling as well as continued drilling that reaches the bottom of the laser-marked line.  
 ※ RPM can be set diversely depending on the bone density.  
 - Choose the appropriate drill that is equal to the length of fixture to be placed and then drilling that continues to the own stopper.



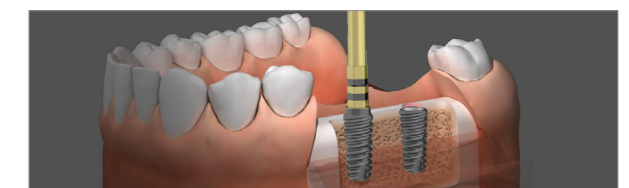
## 4. Countersink

- We recommend 800~1,000RPM while drilling as well as continued drilling that reaches the bottom of the laser-marked line.  
 ※ RPM can be set diversely depending on the bone density.  
 - In case of D1-D2 bone, drill until upper line of laser marking, in case of D3-D4 bone, drill until lower line of laser marking.



## 5. Fixture placement [1]

- Place the fixture with s-Clean No-Mount Driver, a component of Surgical Kit set.  
 - We recommend 20RPM-30Ncm/ Max 40Ncm,  
 - For Narrow fixtures, recommending 20RPM-20Ncm / Max 30Ncm.



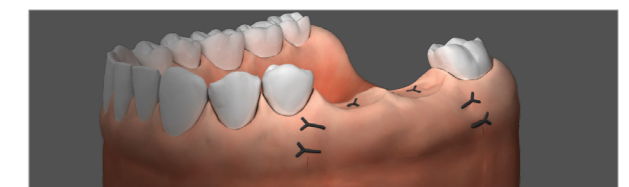
## 6. Fixture placement [2]

- Place the fixture with s-Clean Ratchet Driver, a component of Surgical Kit set, s-Clean Torque Ratchet connected.  
 - Placing that continues to the laser-marked line on the driver.  
 - It should be caution against too excessive torque.



## 7. Cover Screw Connection

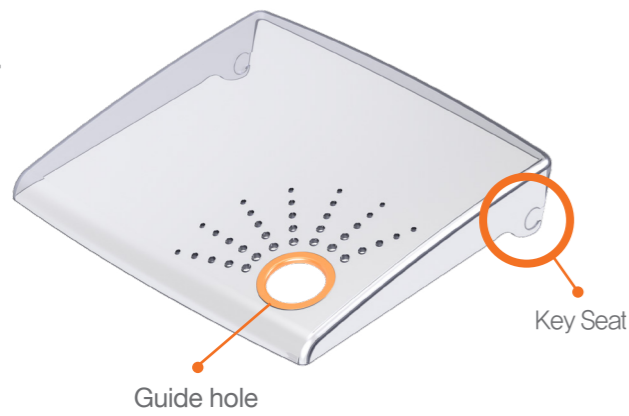
- Remove the cover screw from the Ampoule case using a 1,25 hex hand driver, and then connect the screw to the fixture.  
 - Recommend torque for cover screw is 5-8Ncm.



## 8. Suture

- After connecting the cover screw to the fixture, suture the incised gingiva.  
 - Make sure there is enough attached gingiva for stability.

Cover



Middle tray



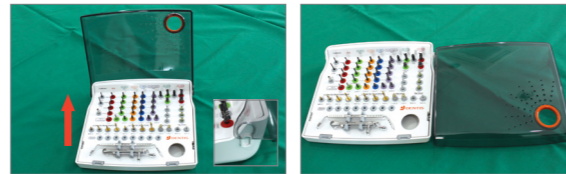
Bottom



SEPARATION



Please raise the cover with finger in the guide hole.



After raising the cover at a right angle, please separate it

ASSEMBLING



After raising the cover at a right angle, please assemble it with a key seat properly

REMOVAL



Please raise the middle tray with finger in the guide hole as following this arrow.

ASSEMBLING

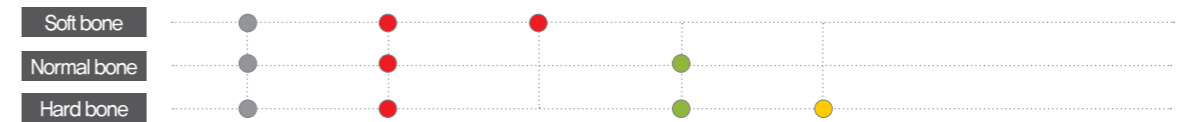
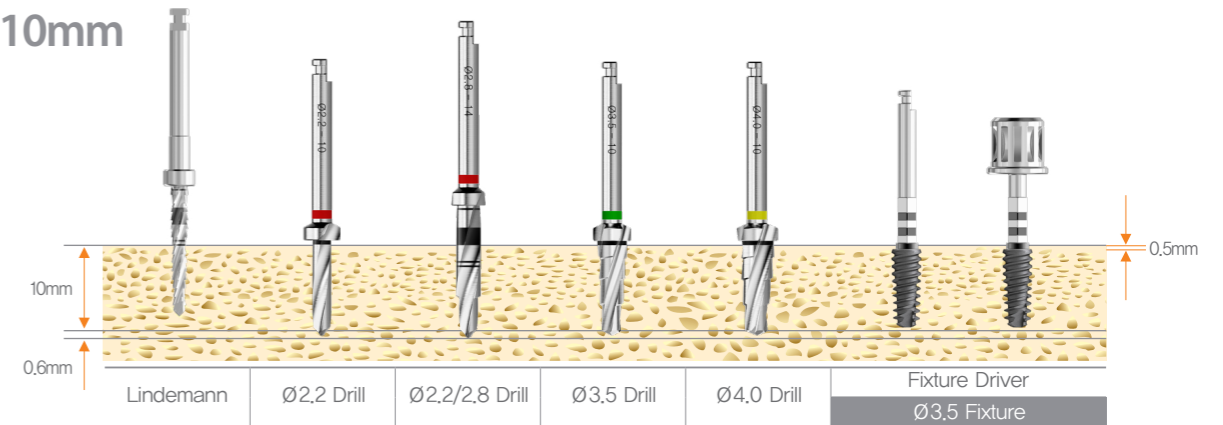


The lower part of middle tray is inserted first, and please press the upper part

# SQ Drilling Sequence

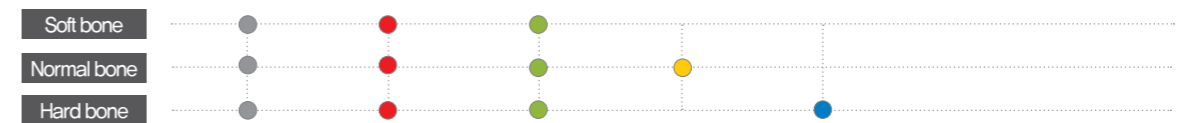
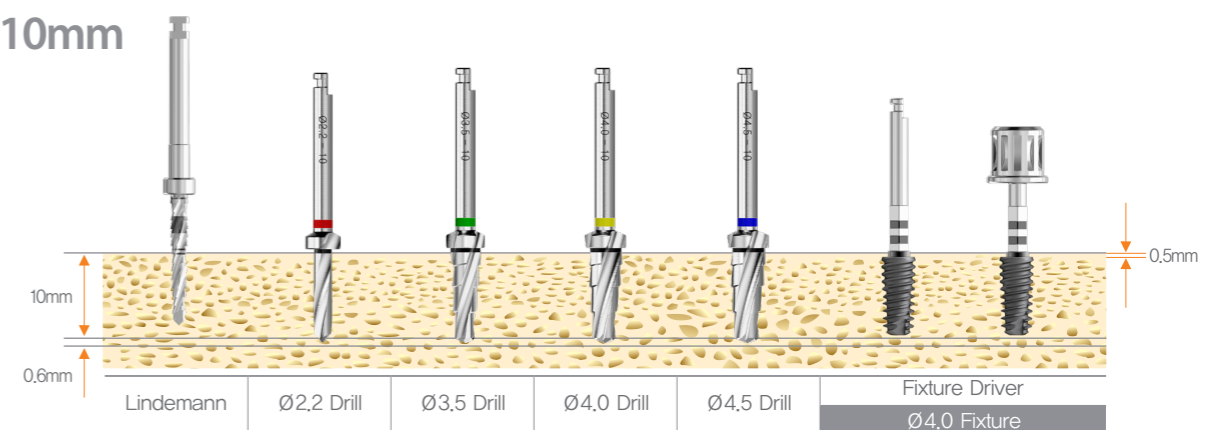
When place fixture, Drilling has to 0.5mm deeper than fixture length and place fixture 0.6mm lower than bone level.

## Ø3.5 x 10mm



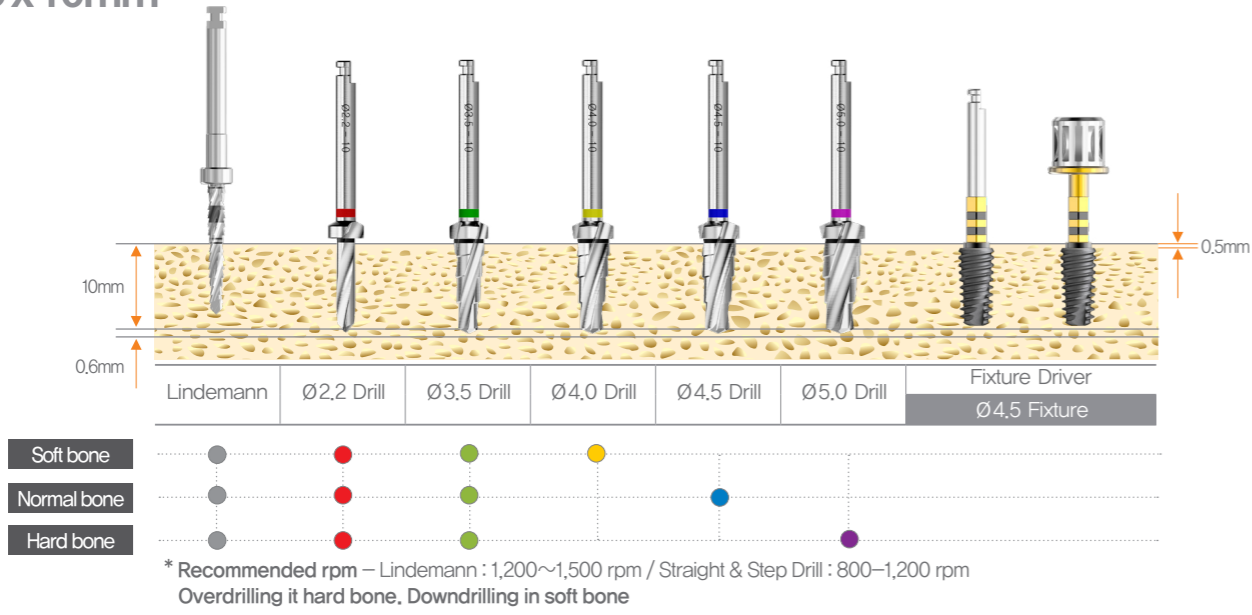
\* Recommended rpm – Lindemann : 1,200~1,500 rpm / Straight & Step Drill : 800~1,200 rpm  
Overdrilling it hard bone. Downdrilling in soft bone

## Ø4.0 x 10mm

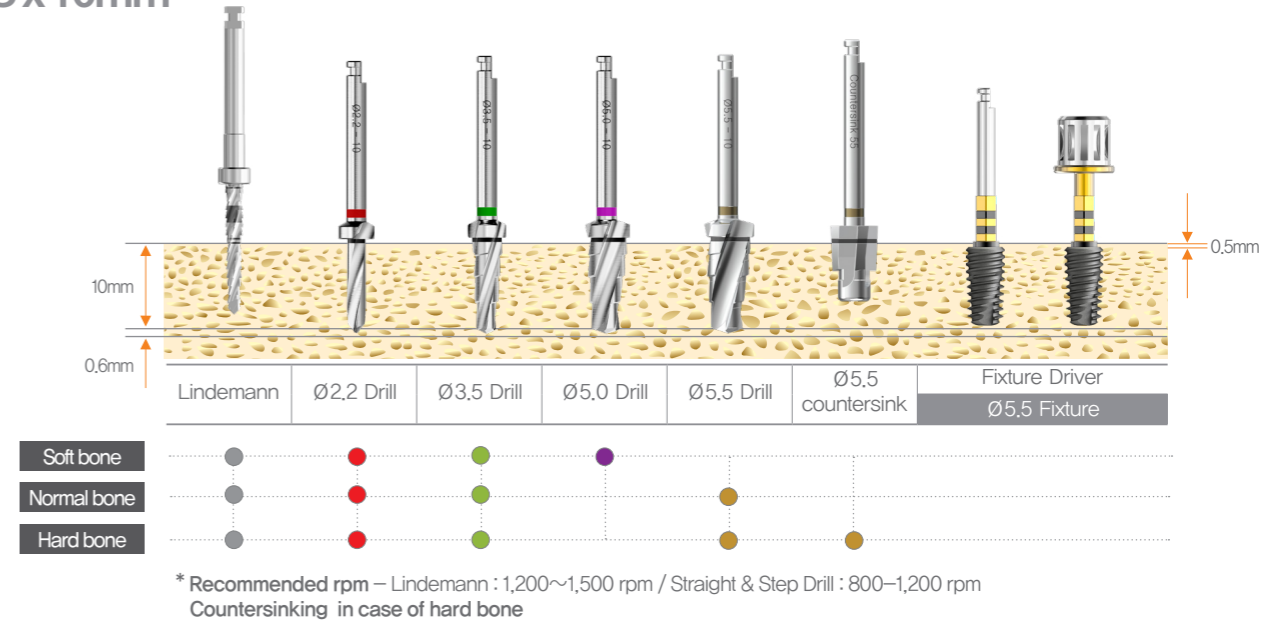


\* Recommended rpm – Lindemann : 1,200~1,500 rpm / Straight & Step Drill : 800~1,200 rpm  
Overdrilling it hard bone. Downdrilling in soft bone

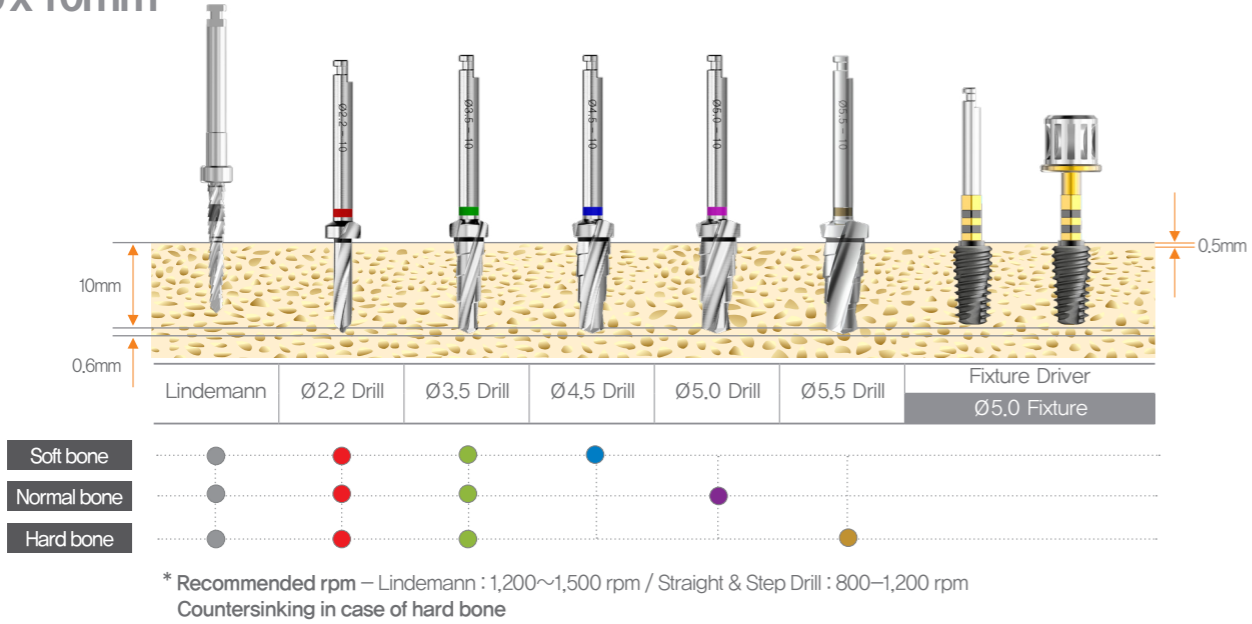
### Ø4.5 x 10mm



### Ø5.5 x 10mm



### Ø5.0 x 10mm

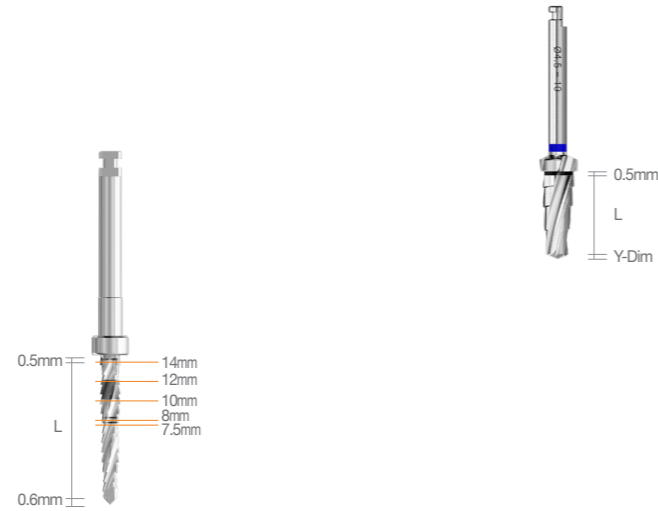


# SQ Surgical Instrument

## Lindemann Drill

Lindemann Drill	L
DLINDST23	14

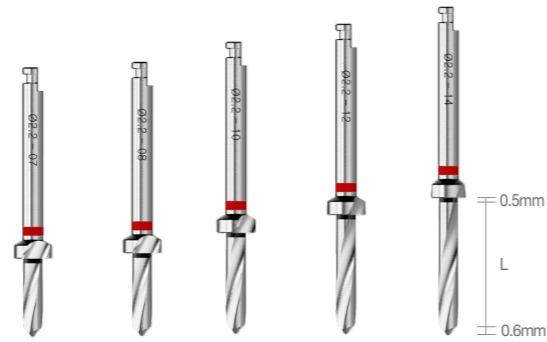
※ For side cutting to change drilling path



## SQ Straight Drill

Ø2.2	L
DSQSD2207	7.5
DSQSD2208	8
DSQSD2210	10
DSQSD2212	12
DSQSD2214	14

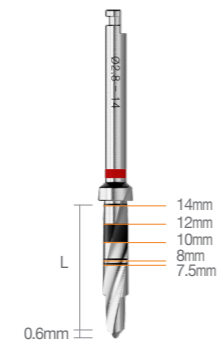
※ Hole formation for fixture placement



## Step Drill 2.8

Ø2.8	L
DSQSD2814	14

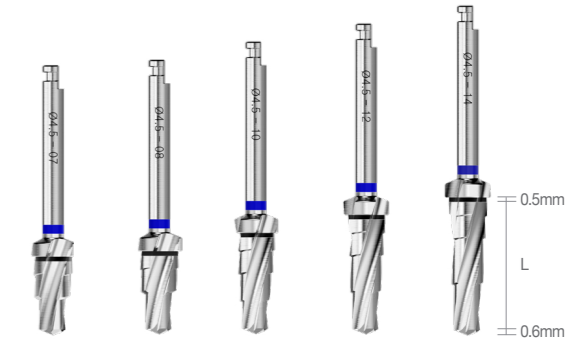
※ Hole formation for fixture placement



## Step Drill

Ø3.5 Twist	Ø4.0 Twist	Ø4.5 Twist	Ø5.0 Twist	Ø5.5 Twist	L
DSQSTD3507	DSQSTD4007	DSQSTD4507	DSQSTD5007	DSQSTD5507	7.5
DSQSTD3508	DSQSTD4008	DSQSTD4508	DSQSTD5008	DSQSTD5508	8
DSQSTD3510	DSQSTD4010	DSQSTD4510	DSQSTD5010	DSQSTD5510	10
DSQSTD3512	DSQSTD4012	DSQSTD4512	DSQSTD5012	DSQSTD5512	12
DSQSTD3514	DSQSTD4014	DSQSTD4514	DSQSTD5014	DSQSTD5514	14

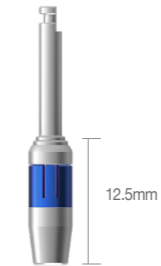
※ To prepare the installation site, reaching final width and depth with fixture-size color coding



## Drill Extension

Code No.
DDE

※ To extend drill length

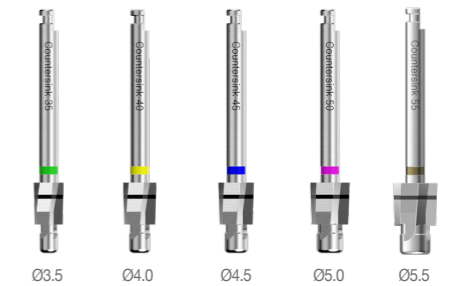


## Countersink

Ø3.5	Ø4.0	Ø4.5	Ø4.5	Ø5.5
*DSQCS35	*DSQCS40	*DSQCS45	*DSQCS50	DSQCS55

※ Used to enlarge the opening of an implant site to the exact implant diameter to reduce the pressure in the bone around the implant neck specially when bone is dense

\* Option



## 1.25 Hex Driver

	Extra Short	Short	Long	Extra Long
Code No.	*DRHDES125	DRHDS125	DRHDL125	*DRHD23125 *DRHD35125
L	5.8	10	15	23 35

※ Used for Cover Screw, Abutment Screw, Healing Abutment

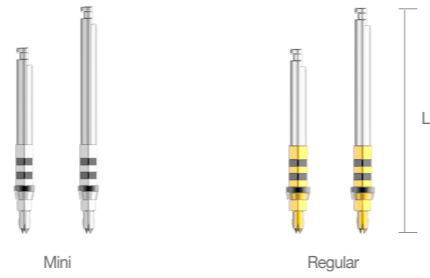
\* Option



### No-Mount Driver

	Mini (Short)	Mini (Long)	Regular (Short)	Regular (Long)
Code No.	DSNDMS	DSNDML	DSNDS	DSNDL
L	23.4	29.4	26.9	29.7

※ To place a fixture with a hand-piece

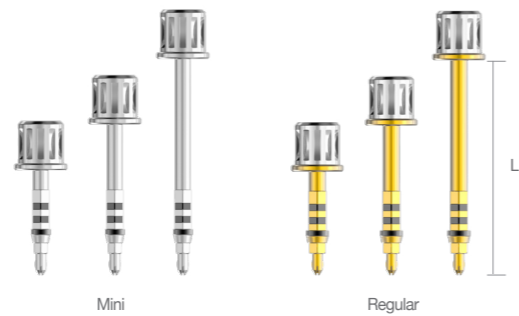


### Ratchet Driver

	Mini (Short)	Mini (Long)	Mini (Extra Long)	Regular (Short)	Regular (Long)	Regular (Extra Long)
Code No.	DRMDSMS	DRMDSML	*DRMDSMEL	DRMDSS	DRMDSL	*DRMDSEL
L	12.2	19.3	29.3	15.7	22.8	29.3

※ To place a fixture with a ratchet

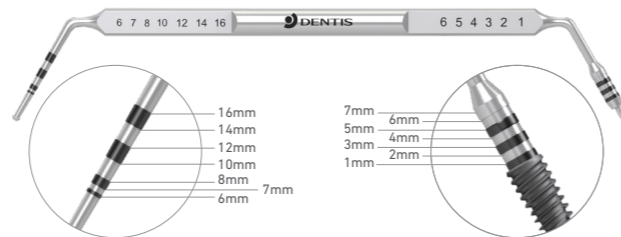
\* : Option



### Probe Depth Gauge

Code No.
DPDG

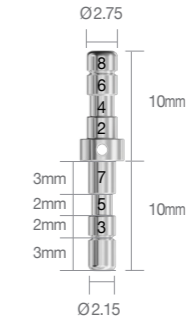
※ To verify the drilling depth or tissue volume



### SQ Parallel Pin for Drill

Code No.
DSQPP

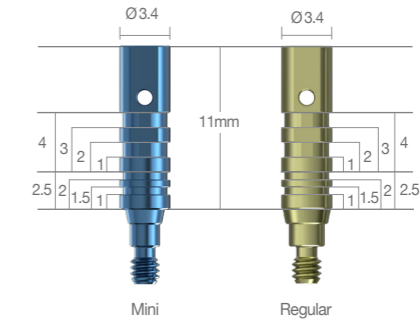
※ To evaluate the initial orientation of the pilot hoe after drilling



### Path Guide Pin for SQ Fixture

	Mini	Regular
Code No.	DSQPGPM	DSQPGPR

※ To evaluate the path after fixture placement



### Torque Ratchet

Code No.
DTR

※ To be used for the final manual seating of the implant.

